

Shed Some Light on Your Testing

call 800-TEST KIT (837-8548)

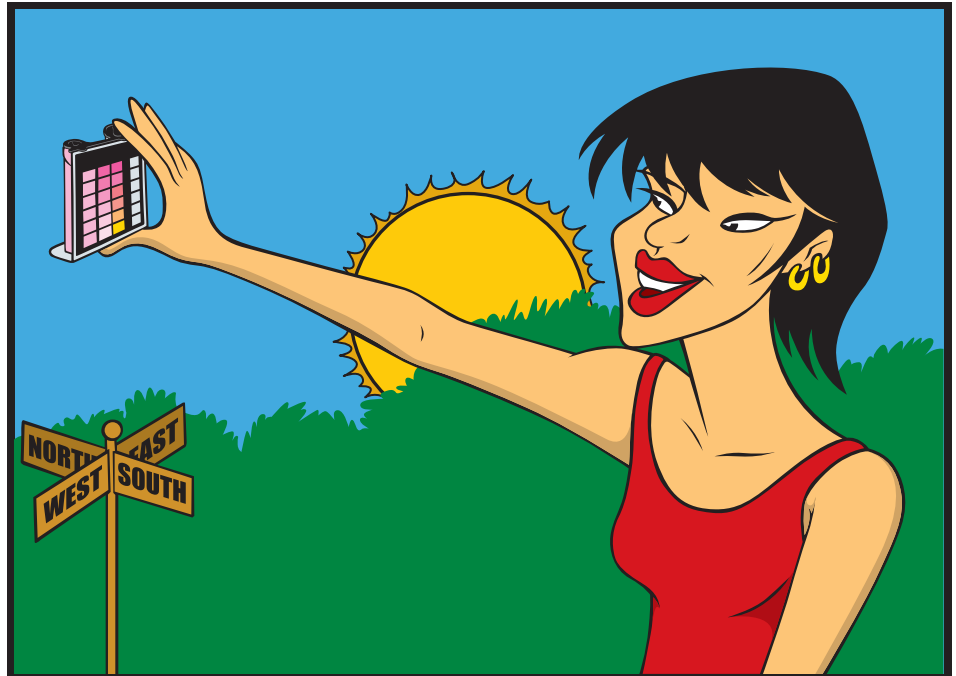
Picture this. You purchase a jacket and slacks that seem to be the exact same color blue under the store's fluorescent lights. The first time you wear them together outside in the sunlight, you realize they don't match after all. That's because the type of light you're in affects your perception of colors. Different light sources make for different colors.

The term for this phenomenon is metamerism (met-TAM-er-izm). Two colors that match under one light source but not another are called a metameric pair.

Metamerism plays a role in water analysis whenever you perform a colorimetric (color-matching) test such as the pH and sanitizer tests in our Complete™ kits. When we formulate our colorimetric tests, we ensure the color that develops in the treated sample can be matched to the color standards in the comparator block when viewed under natural northern light.

Practically speaking, while northern light is preferable, any daylight is okay. But you should NEVER hold the comparator directly up to the sun and look through it. And don't wear sunglasses when you take your readings, either: The tint blocks some light waves necessary to make the right color match.

But what if you must test indoors, away from the daylight needed for reliable results? Use simulated natural light instead!



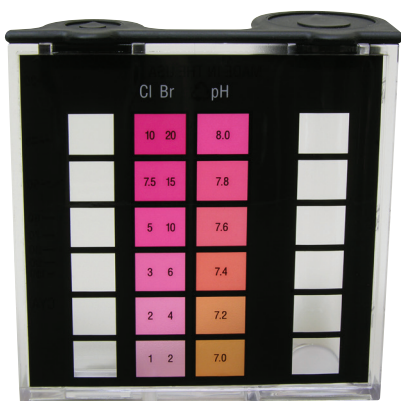
Correct Color Matching: Never hold comparator directly up to the sun and look through it.

The Gepe Slim Lite™ (#9199, *below center*) works well with Taylor's printed-color standards (#9056 comparator from the 2000 Series™, *below left*) as well as with the liquid-color standards in the Midget™ comparator that's found in several of our Professional Series™ and Commercial Series™ kits. It's portable, compact (just 6.2" w x 6" h x 0.6" d), and provides the same high-quality illumination used by professional photographers. The Slim Lite can be held up by hand behind these comparators or mounted on the wall for a more permanent solution.

Batteries and an AC adapter are included, along with a protective sleeve.

The Slim Lite can also be placed on a lightbox stand (#9200, *below right*) to accommodate our longer Slide™ comparators (the liquid-color standards in Taylor's top-of-the-line professional kits).

To avoid a false color match between a metameric pair, be sure to use a daylight simulator whenever you're performing colorimetric tests inside under fluorescent or incandescent lighting.



#9056



#9199



#9200

