

VISUAL DETERMINATION CHLORINE BLEACH INDICATOR — 10.5%

Instr. #5103

COMPONENTS:

1 x 5103	Instruction
1 x 9012	Pipet, Calibrated (0.5 & 1.0 mL) w/ brown cap, plastic
1 x 9010	Pipet, Calibrated (0.5 & 1.0 mL) w/ red cap, plastic
1 x 9198	Sample Tube, Graduated (25 mL) w/ cap, plastic
1 x 6250	Syringe, 1 mL, plastic, green plunger
1 x 89215-217	Syringe, 1 mL, plastic, white plunger
1 x R-0664-C	Bleach Reagent #1, 2 oz
1 x R-0667-C	Bleach Reagent #2, 2 oz
1 x R-0668-C	Bleach Reagent #3, 2 oz

TO ORDER REPLACEMENT PARTS AND REAGENTS CALL TOLL-FREE
800-TEST KIT (800-837-8548).

PROCEDURE:

CAREFULLY READ AND FOLLOW PRECAUTIONS ON REAGENT LABELS.
KEEP REAGENTS AWAY FROM CHILDREN.

1. Using green syringe (#6250), add exactly 0.5 mL bleach to 9198 sample tube.
2. Dilute sample to 10 mL mark with distilled, deionized, or tap water.
3. Using 1.0 mL pipet (#9012), add 1 pipetful (as much as can be drawn up with the bulb) of Bleach Reagent #1 (R-0664). Swirl to mix.
4. Using 1.0 mL pipet (#9010), add 1 mL of Bleach Reagent #2 (R-0667) to the sample. Swirl to mix. Sample will turn deep yellow (Fig. 1) or brown (Fig. 2).

5. Using white syringe (#89215-217), add exactly 1 mL of Bleach Reagent #3 (R-0668) to the sample. Swirl to mix. Sample will not become colorless if bleach concentration is at or above 10.5%.



Fig. 1

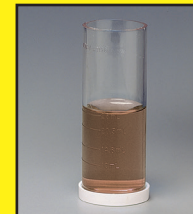


Fig. 2



31 Loveton Circle, Sparks, MD 21152 USA
800-TEST KIT (837-8548) • 410-472-4340

120420