

## DROP TEST

### M ALKALINITY (1 drop = 10 ppm)

Instr. #5079

#### COMPONENTS:

1 x 5079	Instruction
1 x 9198G	Sample Tube, Graduated (25 mL) w/ cap & green dot, plastic
1 x R-0637-C	Methyl Orange Indicator, 2 oz, DB
1 x R-0724-C	Hydrochloric Acid .12N, 2 oz, DB

TO ORDER REPLACEMENT PARTS AND REAGENTS CALL TOLL-FREE  
800-TEST KIT (800-837-8548).

#### PROCEDURE:

CAREFULLY READ AND FOLLOW PRECAUTIONS ON REAGENT LABELS.  
KEEP REAGENTS AWAY FROM CHILDREN.

NOTE: When dispensing reagents from dropper bottles, **always** hold bottle in a vertical position.

#### M Alkalinity Test

1. Rinse and fill 25 mL sample tube (#9198G) to 25 mL mark with water to be tested.

NOTE: For results in grains per gallon (gpg), fill to 14.6 mL mark.

2. Add 3 drops R-0637 Methyl Orange Indicator. Swirl to mix. Sample will turn yellow (Fig. 1).
3. Add R-0724 Hydrochloric Acid .12N dropwise, swirling and counting after each drop, until color changes from yellow to orange (salmon pink) (Fig. 2).

4. Multiply drops of R-0724 Hydrochloric Acid .12N by 10. Record as parts per million (ppm) M alkalinity as calcium carbonate ( $\text{CaCO}_3$ ).

NOTE: For 14.6 mL sample, record drops of R-0724 Hydrochloric Acid .12N as grains per gallon (gpg) M alkalinity as calcium carbonate ( $\text{CaCO}_3$ ).

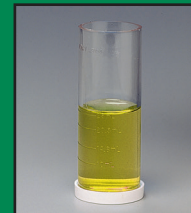


Fig. 1



Fig. 2



31 Loveton Circle, Sparks, MD 21152 USA  
800-TEST KIT (837-8548) • 410-472-4340