



**taylor**<sup>®</sup>  
aquarium

**pH**

(6.0–7.6)

**Simple & Accurate**

To order replacement parts and reagents; Call toll-free  
**800-TEST KIT (800-837-8548)** or Visit  
**[www.TaylorAquarium.com](http://www.TaylorAquarium.com)**

**Taylor Water Technologies LLC**  
410-472-4340  
800-TEST KIT (837-8548)  
[www.TaylorAquarium.com](http://www.TaylorAquarium.com)



**taylor**<sup>®</sup> *the most trusted name in water testing*<sup>®</sup>

**K-4100**

**183  
tests**

**pH** – pH is a measurement of how acidic or basic water is. A neutral pH is 7.0. Anything above a pH of 7.0 is basic and anything below 7.0 is acidic. A consistent pH level is essential in maintaining a healthy aquarium environment and to reduce stress to fish. The most common changes in pH can be caused by overcrowding, overfeeding, and filtration issues. As a precaution, the pH of the aquarium water should be tested weekly.

### Kit Components

R-4000	pH Indicator
R-4001	pH Increase
R-4002	pH Decrease
4023	Test Tube
6021	Rubber Stopper
5263	Instruction
5627	Color Card - pH



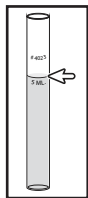
# pH Indicator

## pH (6.0-7.6)

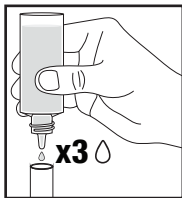
### Procedure

Keep Reagents Away From Children. Do not put reagents or samples into aquarium.

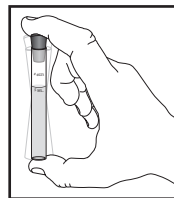
### pH Test



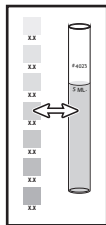
1. Add 5 mL of sample water to a clean test tube (#4023).



2. Add 3 drops of R-4000 pH Indicator. Hold dropper bottle vertically when dispensing the reagent.



3. Secure stopper in test tube and shake to mix.



4. Compare the results to the color card immediately. Make sure to hold the test tube in bright light and fully against the white background for the most accurate reading.

### Recommendations

The test is designed for samples with pH between 6.0 and 7.6. Test will not provide accurate results if sample is out of range. If pH results match 6.0 or 7.6, consider that the pH could be below or above those pH values, respectively.

### GENERAL pH PREFERENCES FOR COMMON FRESHWATER FISH

MINNOW, GOURAMI, ANGELFISH, SHRIMP, BARB, DANIO	6.0-8.0
GUPPY	6.0-8.4
GOLDFISH	6.5-7.5
BETTA	6.8-7.5
TETRA	6.8-7.8
PLATY, MOLLY	6.8-8.0
SWORDTAIL, SNAIL	7.0-8.4
AFRICAN CICHLID	7.8-8.6

To lower or raise the pH of the aquarium, use *pH INCREASE (R-4001)* or *pH DECREASE (R-4002)* – sold separately – to bring pH within desired range.