

LAUNDRY WASHROOM KIT TOTAL IRON

Instr. #5307FE

COMPONENTS:

- 2 x 4030 Pipet, Calibrated (0.5 & 1.0 mL) w/ cap, plastic
- 1 x 5307FE Instruction
- 1 x 9198 Sample Tube, Graduated (25 mL) w/ cap, plastic
- 1 x R-0851-C Iron Reagent #1*, 2 oz
- 1 x R-0852-C Iron Reagent #2, 2 oz

TO ORDER REPLACEMENT PARTS AND REAGENTS CALL TOLL-FREE
800-TEST KIT (800-837-8548).

PROCEDURE:

**CAREFULLY READ AND FOLLOW PRECAUTIONS ON REAGENT LABELS.
KEEP REAGENTS AWAY FROM CHILDREN.**

Total Iron Spot Test

To test cloth:

1. Using a 1.0 mL pipet (#4030), place 1 drop R-0851 Iron Reagent #1 on corner of laundered cloth. WAIT 5 MINUTES.
2. Using a separate 1.0 mL pipet, add 2 drops R-0852 Iron Reagent #2.
3. Cloth will turn blue if iron is present.

To test rinse:

1. Rinse and fill 25 mL sample tube (#9198) to 10 mL mark with water to be tested.
2. Using a 1.0 mL pipet (#4030), add 0.5 mL R-0851 Iron Reagent #1. Swirl to mix. WAIT 5 MINUTES.
3. Using a separate 1.0 mL pipet, add 1.0 mL R-0852 Iron Reagent #2. Swirl to mix. Sample will turn blue (Fig. 1) if iron is present.

*WARNING: Iron Reagent #1 (R-0851) contains 10-15% w/w hydrochloric acid, a corrosive acid.

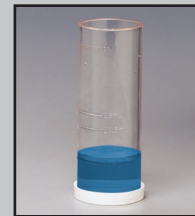


Fig. 1



31 Loveton Circle, Sparks, MD 21152 USA
800-TEST KIT (837-8548) • 410-472-4340

011018